

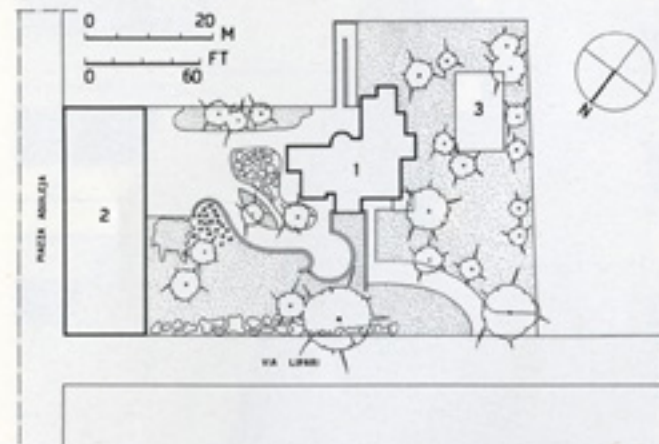


CASE D'ABITAZIONE IN PIAZZA AQUILEJA A MILANO, ITALIA.

Vico Magistretti, architetto.

Collaboratrice per il giardino, Elena Balsari Berrone, architetto.

Questo edificio sorge a Milano, in un'area posta fra piazza Aquileja e via Lipari. Era un terreno nel quale una convenzione comunale prevedeva la costruzione di due edifici, uno "esterno" in fregio alla piazza ed uno interno, isolato in uno spazio a giardino. L'edificio affacciato sulla piazza è stato risolto come blocco ad appartamenti grandi, con i locali di servizio rivolti verso la piazza e le zone di soggiorno e le camere rivolte verso il giardino. L'edificio qui illustrato è la torre interna, alta trenta metri, progettata in modo tale da consentire le più ampie variazioni nel taglio degli appartamenti. Il progettista ha pensato infatti di raggruppare i nove piani fuori terra in tre gruppi di tre piani ciascuno e all'interno di ogni gruppo dare la possibilità di realizzare tre appartamenti di un piano completo ciascuno, oppure due appartamenti duplex di un piano e mezzo ciascuno, oppure sei appartamenti occupanti ciascuno l'area di mezzo piano. La combinabilità di queste soluzioni dà in effetti un numero elevatissimo di possibilità planimetriche ed esprime, attraverso la



Planimetria

1 edificio alto - 2 edificio basso - 3 gioco bambini.

Site plan

1 tall building - 2 low building - 3 children's playground.

APARTMENT HOUSES IN PIAZZA AQUILEJA, MILAN, ITALY.

Vico Magistretti, architect.

Consultant for the garden, Elena Balsari Berrone, architect.

This building is situated in Milan, in an area between Aquileja Square and Lipari Road.

It was a site on which town planning requirements indicated the construction of two buildings, an outside one as a border to the Square and an inside one, isolated in a garden space. The building facing the Square is designed as a block of large apartments, with the service rooms facing the Square and the living zones and bedrooms facing the garden.

The building shown here is the internal tower, 65 ft. high, designed in such a manner as to permit the widest variations in size of apartment. The designer has grouped the nine storeys above the ground into three groups of three storeys each and inside each group he gives the possibility of constructing three apartments of one complete floor each or two apartments of one and a half floors each, or six apartments each occupying one half of a floor.

Combinations of these designs gives a very high number of possible layouts and expresses by the creation of living rooms

of double height, a figurative characteristic which outside suggests the internal volumetric design of the double floor apartments.

The tower structure, with L walls of exposed reinforced concrete, follows the perimeter of each room and creates nuclei which when they are grouped together give rise to the figurative expression of the building.

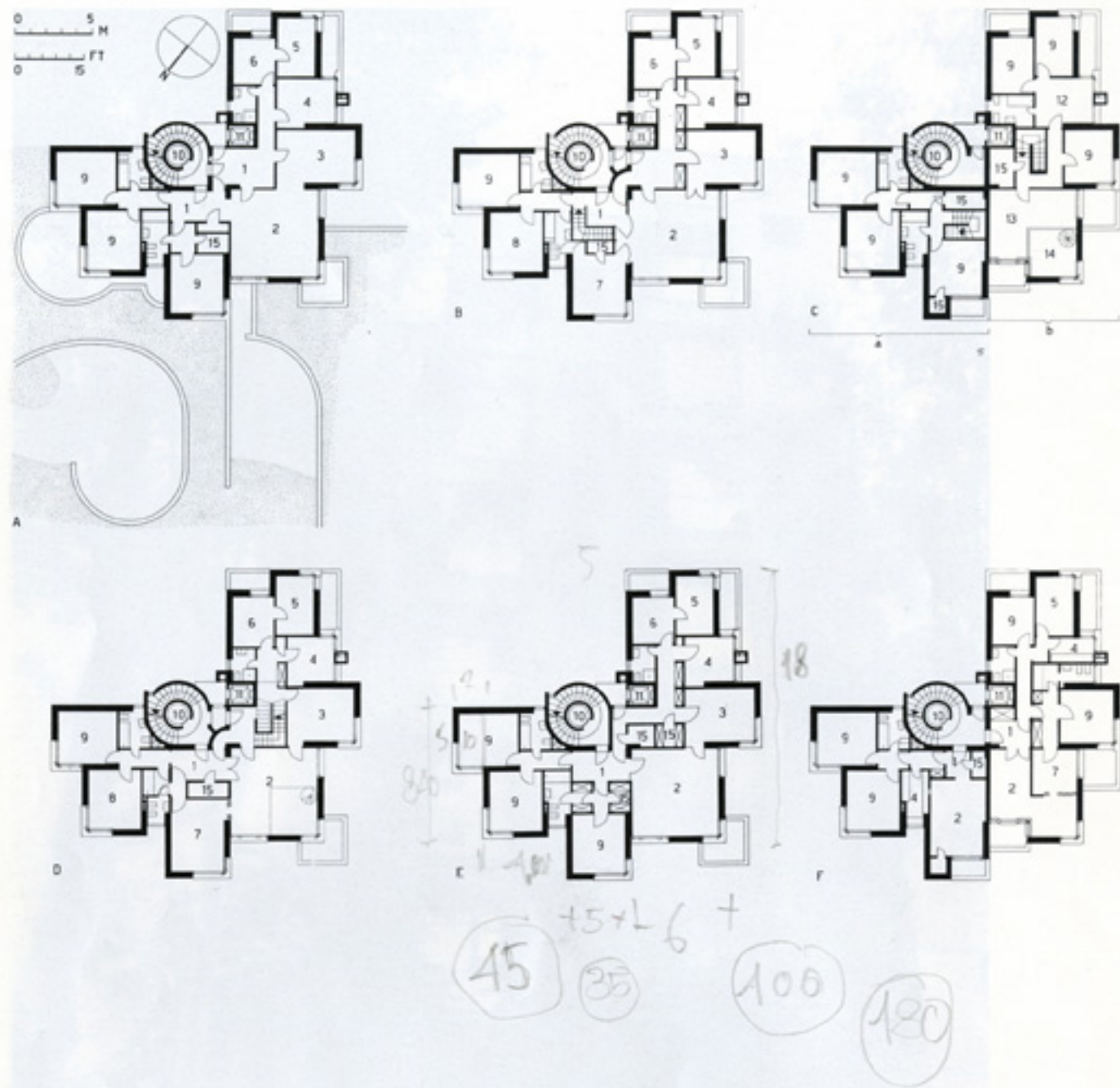
The external finish is completed by the boxes for the shutters, which are of copper, and by the windows, all of double glass, which are painted bright red. Overall site area 17,200 sq. ft. - area covered by the building 3,760 sq. ft. - cubage 424,00 cu. ft. - number of rooms 120 - reinforced concrete structure - tile lintol floors - stairs: reinforced concrete structure; steps and landings faced with Aurisina stone - external facings: exposed concrete - internal linings: chalk finish in all rooms; tiles in the services - flooring in the entrance hall in Aurisina stone - external door and window frames of natural painted pitch pine - year of construction 1965.

of double height, a figurative characteristic which outside suggests the internal volumetric design of the double floor apartments.

The tower structure, with L walls of exposed reinforced concrete, follows the perimeter of each room and creates nuclei which when they are grouped together give rise to the figurative expression of the building.

The external finish is completed by the boxes for the shutters, which are of copper, and by the windows, all of double glass, which are painted bright red.

Overall site area 17,200 sq. ft. - area covered by the building 3,760 sq. ft. - cubage 424,00 cu. ft. - number of rooms 120 - reinforced concrete structure - tile lintol floors - stairs: reinforced concrete structure; steps and landings faced with Aurisina stone - external facings: exposed concrete - internal linings: chalk finish in all rooms; tiles in the services - flooring in the entrance hall in Aurisina stone - external door and window frames of natural painted pitch pine - year of construction 1965.

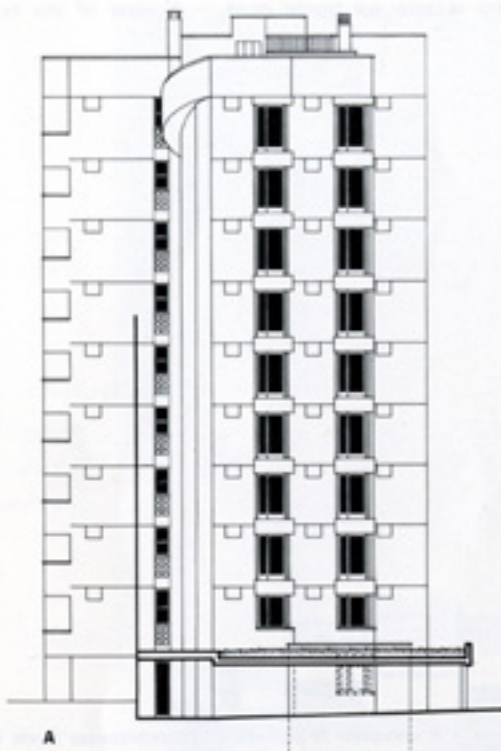


A Pianta del piano rialzato - B appartamento su due piani tipo B, pianta del piano ingresso - C pianta del piano inferiore dell'appartamento tipo B e pianta del piano superiore dell'appartamento tipo A - D pianta dell'appartamento tipo A al piano dell'ingresso - E pianta dell'appartamento tipo C - F pianta dell'appartamento tipo D

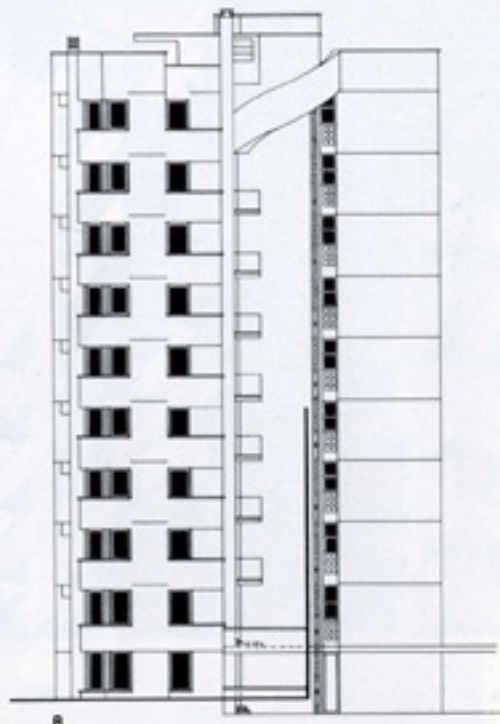
1 ingresso - 2 soggiorno - 3 pranzo - 4 cucina - 5 letto di servizio - 6 guardaroba - 7 studio - 8 spogliatoio - 9 camera da letto - 10 ascensore padronale - 11 ascensore di servizio - 12 gioco bambini - 13 biblioteca - 14 vuoto sul soggiorno - 15 armadio-spogliatoio.

A Upper ground floor plan - B two-level flat type B, plan of entrance level - C lower level plan of flat type B and upper level plan of flat type A - D plan of flat type A at entrance level - E plan of flat type C - F plan of flat type D

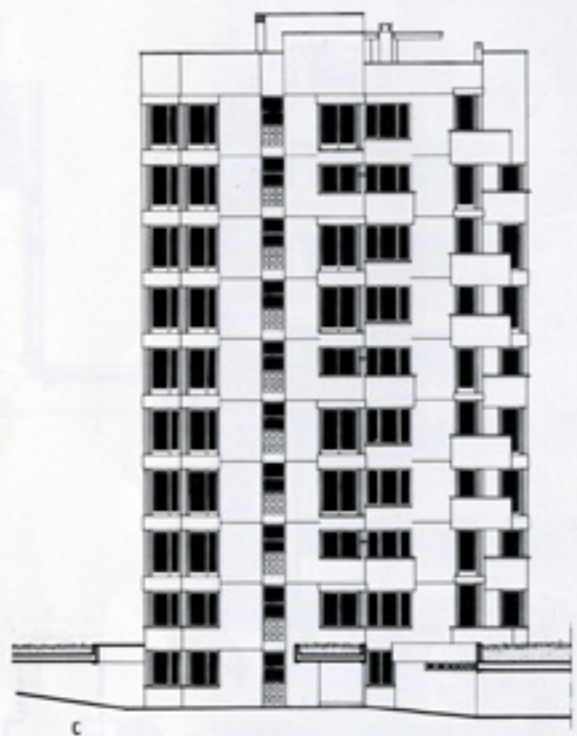
1 entrance - 2 living room - 3 dining room - 4 kitchen - 5 service bedroom - 6 wardrobe - 7 study - 8 dressing room - 9 bedroom - 10 main elevator - 11 service lift - 12 children's play area - 13 library - 14 upper part of living room - 15 wardrobe - cloaks.



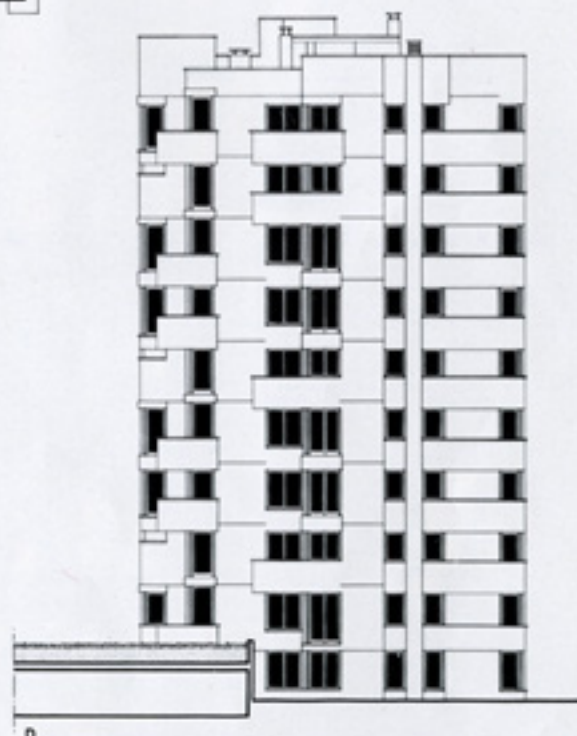
A



B



C



D

A Fronte est - B fronte sud - C fronte nord - D fronte ovest. - A East elevation - B south elevation - C north elevation - D west elevation.



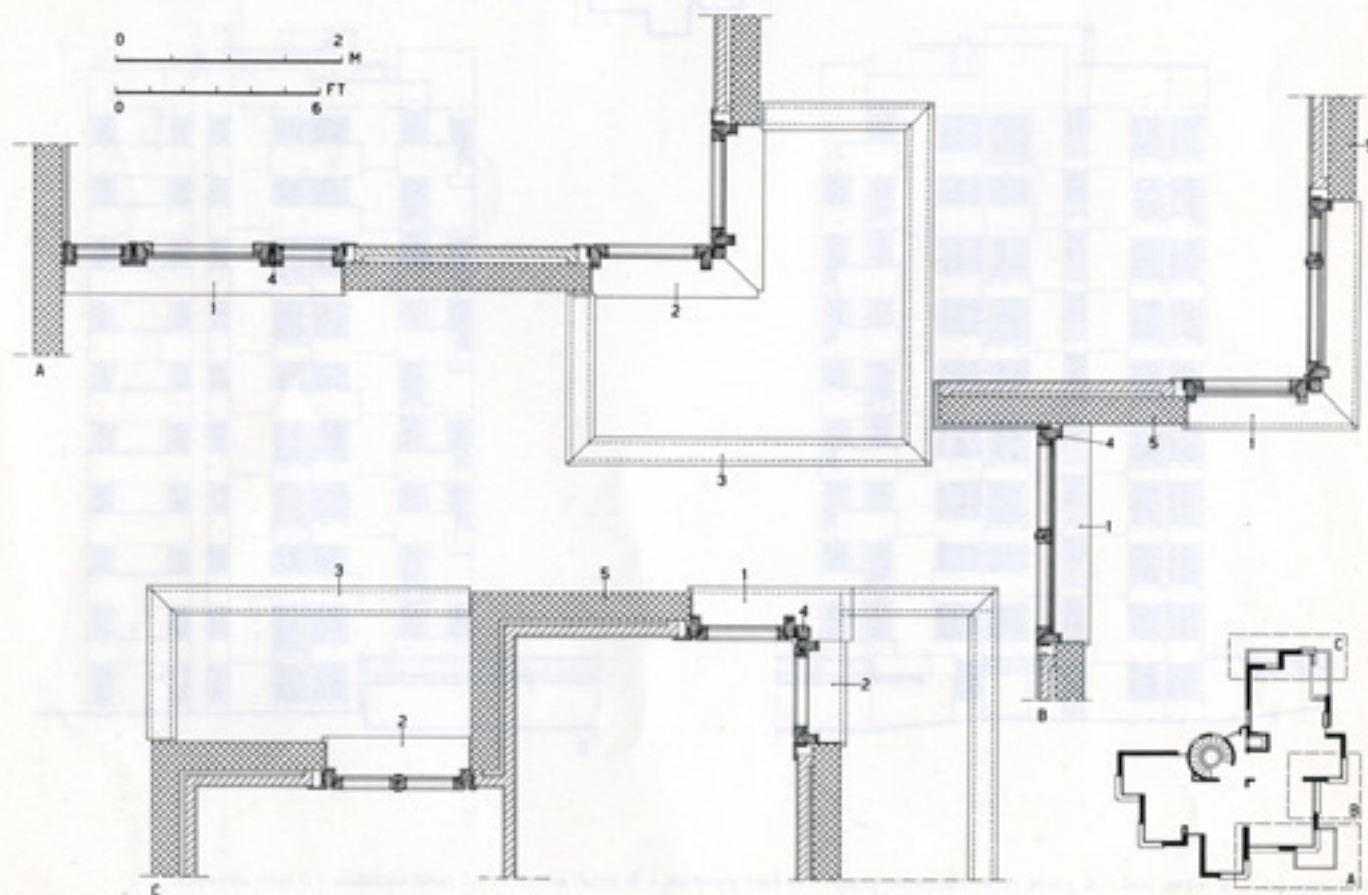
Uno scorcio sul fronte nord. - A view of the northern front.

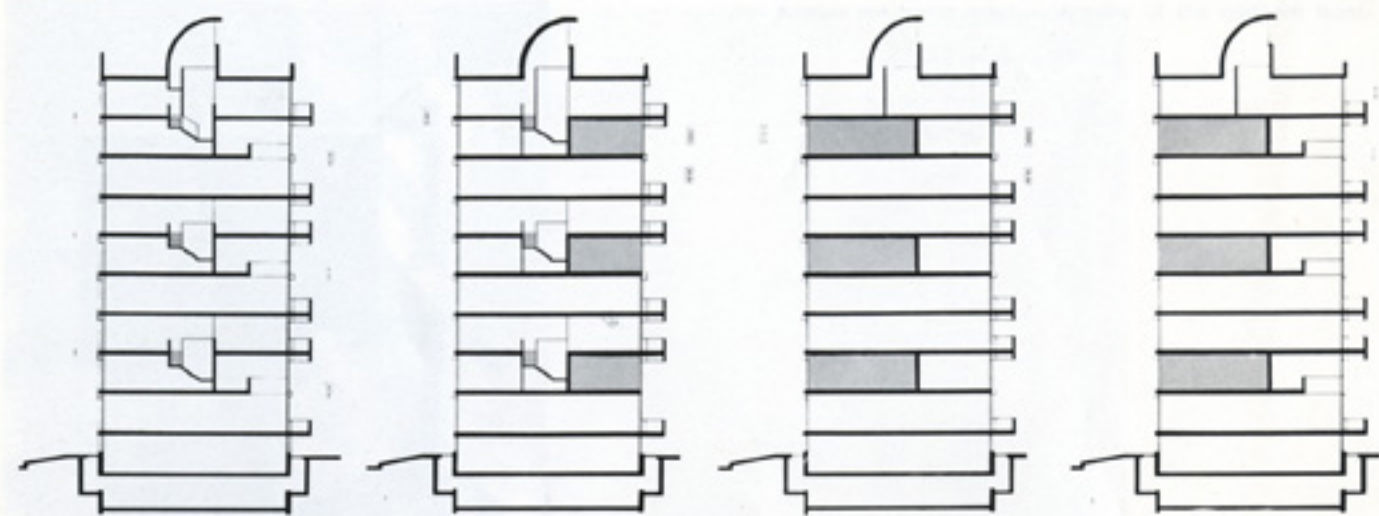
A, B, C Sezioni orizzontali

1 davanzale in pietra vetusta - 2 soglia in pietra vetusta - 3 copertina in pietra vetusta - 4 serramenti in pitch-pine - 5 calcestruzzo faccia vista.

A, B, C Horizontal sections

1 stone window-sill - 2 stone threshold - 3 stone coping - 4 pitch-pine frames - 5 exposed concrete.





1, 2, 3, 4 Sezioni verticali mostranti le possibili combinazioni dei vari tipi di appartamento nel blocco alto. - 1, 2, 3, 4 Cross-sections showing different arrangements of each type of flats in tall block.

A sinistra: il blocco a torre visto da nord. A destra: scorcio sul fronte ovest dai caratteristici balconi in aggetto. - Left: tower block as seen from north. Right: view of west elevation with characteristic cantilevered balconies.

