

A J

THE ARCHITECTS' JOURNAL

No. 3328 Vol. 128 December 11, 1958

9-13 Queen Anne's Gate, London, S.W.1. Tel. WHIL 0611

Subscription rates: post paid, inland £2 15s. 0d. per annum; abroad, £3 10s. 0d. per annum. Single copies, 1s.; post paid, 1s. 6d. Special numbers are included in subscriptions; single copies, 2s.; post paid, 2s. 6d. Back numbers more than 12 months old (when available), double price. Half-yearly volumes can be bound complete with index in cloth cases for £1 10s. 0d.; carriage 2s. EXTRA.

N
(Thomas)

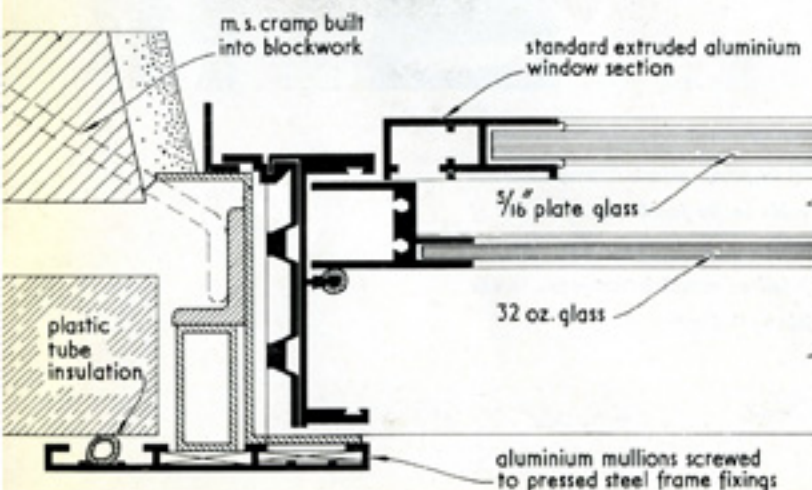
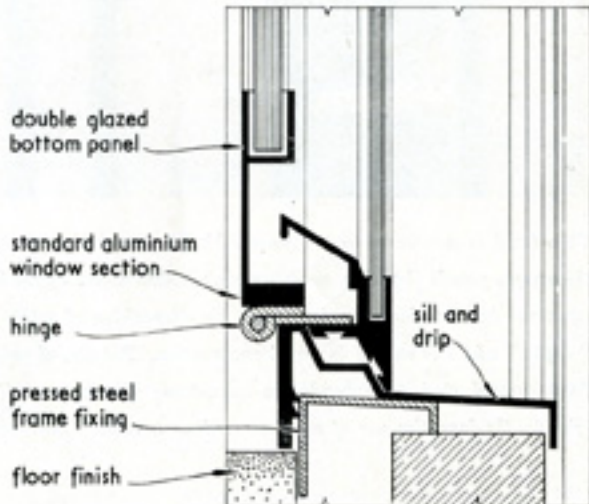
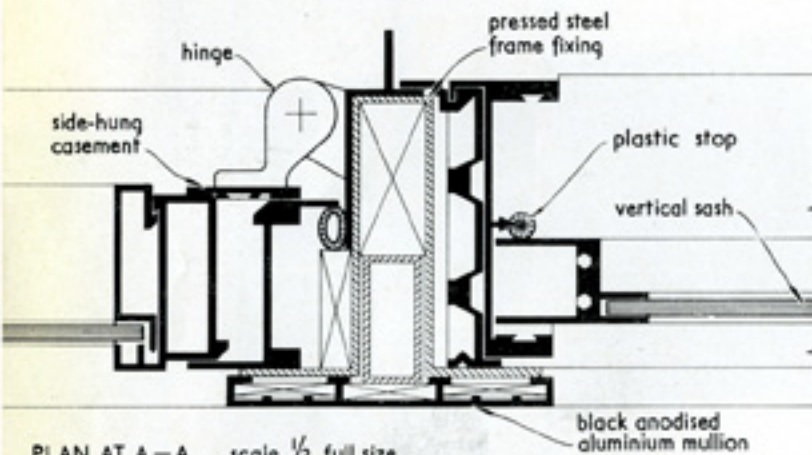
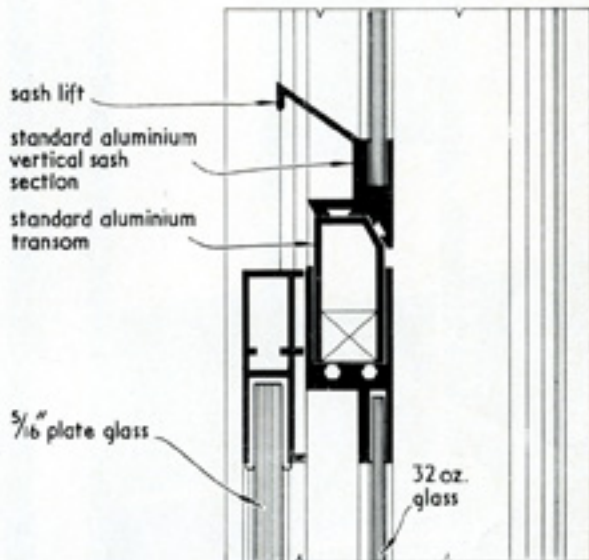
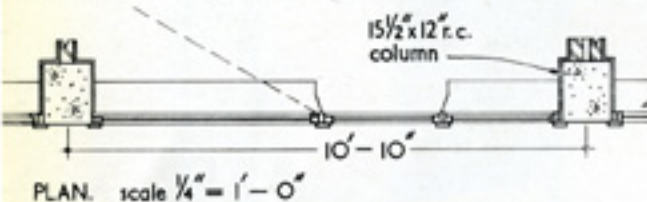
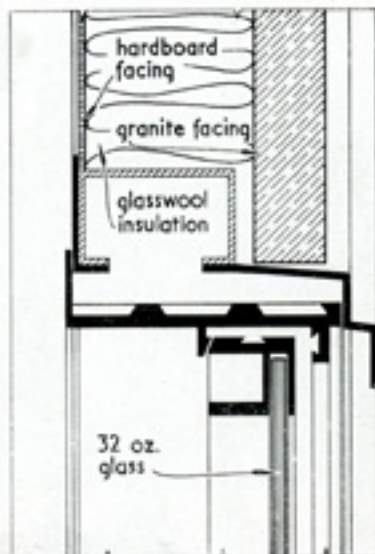
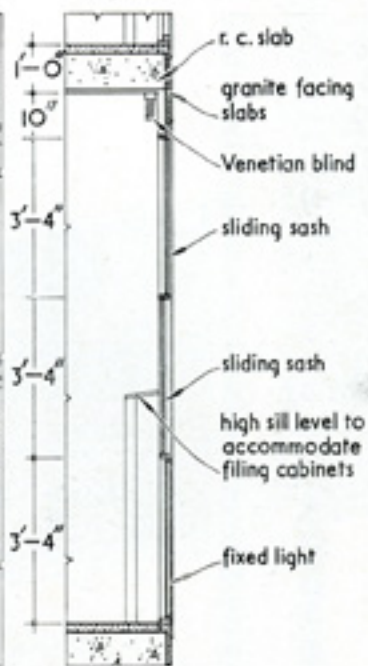
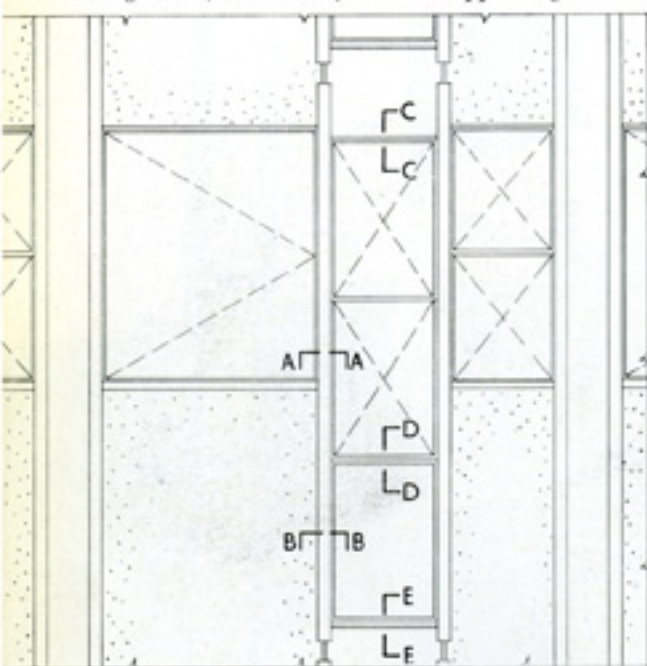


This detail is interesting on two counts. First as a variation on the typical office block cladding. The height of the opaque panels (infilling, white granite) is determined by the height of the filing cabinets. Though it is not apparent in this close-up photograph, the disposition of solids and voids on the facade gives an effect of "depth" which is unique in panel construction. The second point of interest is the build-up of the detailing from pressed steel and aluminium extrusions. Though not all the junctions would be acceptable in our climate, the inventive use of snap-on sections to make "aluminium joinery" deserves study.

working detail

CURTAIN WALL: OFFICE BLOCK IN MILAN

Vico Magistretti, architect. (Material supplied by Derek C. Thomas)



note: figured dimensions in feet and inches are approximate